

What's New in

 **CAMWorks** WireEDM Pro



Geometric Americas Inc. makes no warranties, either expressed or implied with respect to this document. Geometric reserves the right to revise and improve products as it sees fit, and to revise the specifications and information contained herein without prior notice. Due to continuing product development, specifications and capabilities described in this document are subject to change without notice.

Copyright © 2021 Geometric Americas Inc. All Rights Reserved.

July 2021



Table of Contents

What's New in CAMWorks WireEDM Pro 2021 SP1	3
Supported Platforms	3
Resolved CPRs	3
General	4
Functionality to Begin Glue Stops as Start Hole	4
Support for CAMWorks WireEDM Pro in Spanish Language	5



What's New in CAMWorks WireEDM Pro 2021 SP1

Supported Platforms

Supported Platforms for 64-bit	
Solid Modeler:	The 64-bit version of: <ul style="list-style-type: none">- SOLIDWORKS 2021- SOLIDWORKS 2020- CAMWorks Solids 2021- CAMWorks Solids 2020
Operating System:	64-bit version of: <ul style="list-style-type: none">- Windows 10- Windows 8.1- Windows 7 (SP1 or higher) <p style="text-align: right;">[*Home Editions are not supported]</p> <p>Note: CAMWorks WireEDM Pro 2021 is supported only on 64-bit Operating systems.</p>

Resolved CPRs

Purpose of Document:	The Resolved CPR (<i>Customer Problem Report</i>) document has been updated to report the software errors that have been resolved in the current Service Pack (SP1).
Path to Document:	To view the document, select: <i>Start>>All Programs>>CAMWorks WireEDM Pro 2021>>Resolved CPR's.</i>



General

New - Functionality to Begin Glue Stops as Start Hole

Purpose:

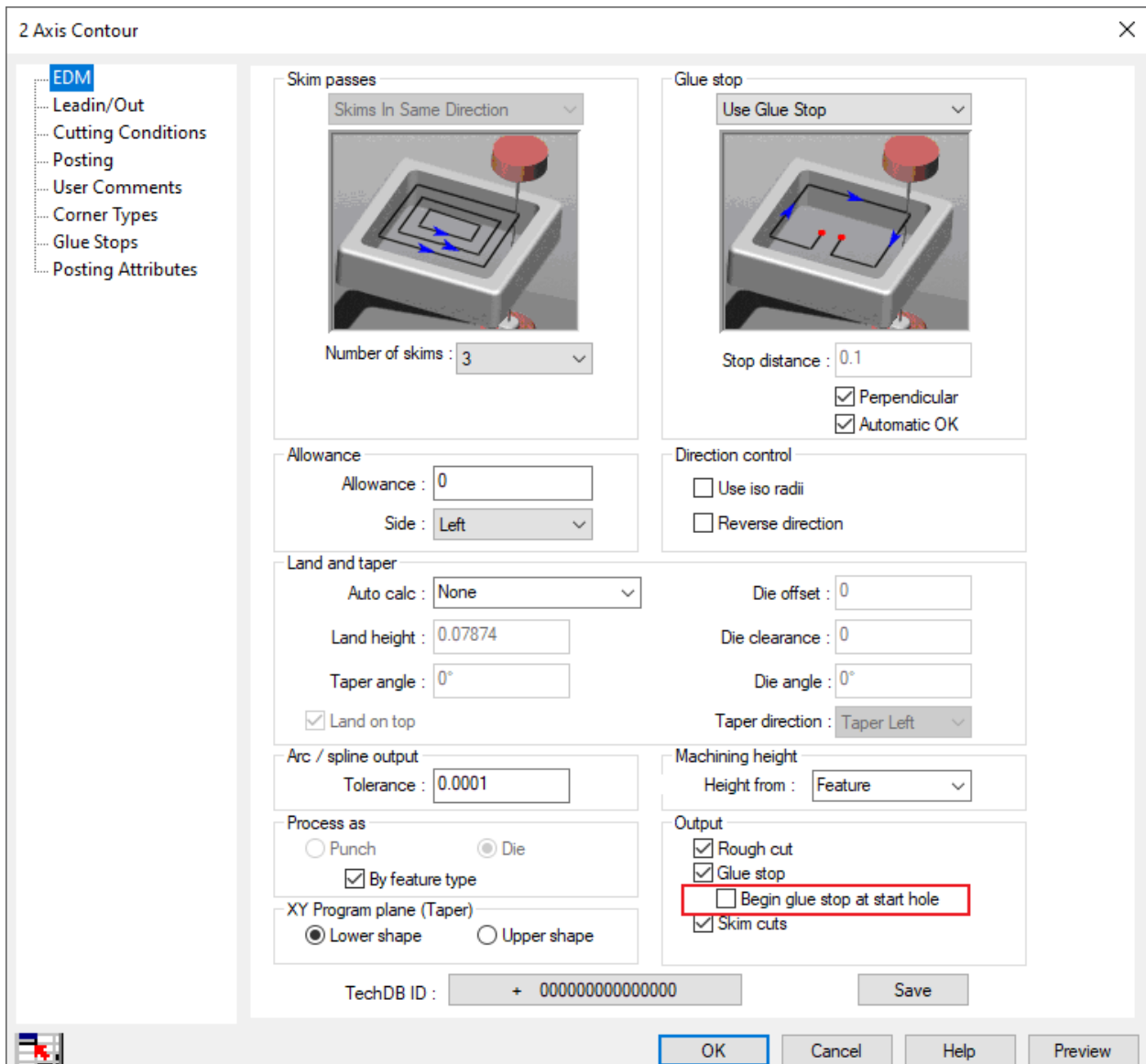
To provide the functionality of starting Glue Stop from the start hole, or thread point location.

Implementation:

Being able to start the tab cut, or glue stop pass, from the start hole allows for more flexibility in machining strategy. For example, this simplifies the steps need to manually adjust the process order for operations, rough, and finish passes.

Using 'Begin Glue Stop as Start Hole'

A new check box has been added to the Output section of the *EDM* tab when editing an operation. When selected, the glue stop, or tab cut, portion of the operation will begin at the thread point or start hole of the operation.



Applying 'Begin glue stop at start hole' option



New - Support for CAMWorks WireEDM Pro in Spanish Language

Purpose:

From *CAMWorks WireEDM Pro 2021 SP1* version onwards, the **CAMWorks WireEDM Pro** application will be supported in the Spanish language.